



**afimilk®**

---

**AfiFarm 5.4**

**AfiCollar阿菲金项圈 + AfiCloud云**

**Amir Ben Yehoshua  
Chief Application Support  
China Kickoff Feb. 2020**

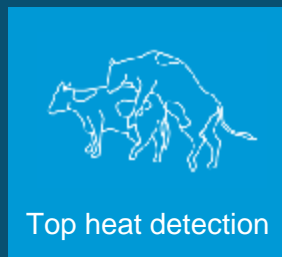


# AfiCollar



**afimilk**<sup>®</sup>

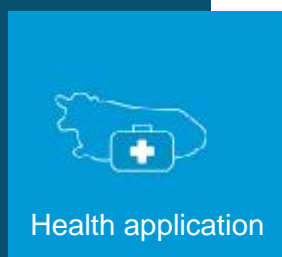
# VITAL KNOWHOW IN EVERY MOTION



领先的发情揭发率



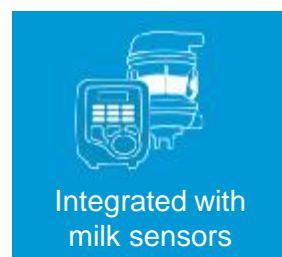
反刍和采食



健康预警



高识别率



和挤奶点高度融合



# VITAL KNOWHOW

New Reader  
Suitable for Outdoor use  
新天线-适用于户外



**AfiFarm™ 5.4**



# IN EVERY MOTION



Comm range – up to 200m  
Battery – up to 7 years  
Data storage – more than 24h  
3D accelerometer  
NFC information  
识别范围-半径高达200米  
电池寿命-高达7年  
数据存储-超过24小时  
3D加速计  
NFC信息



Parlor, sort, feed, high  
quality animal ID  
奶厅, 分群门, 饲喂,  
高识别率



# VITAL KNOWHOW IN EVERY MOTION

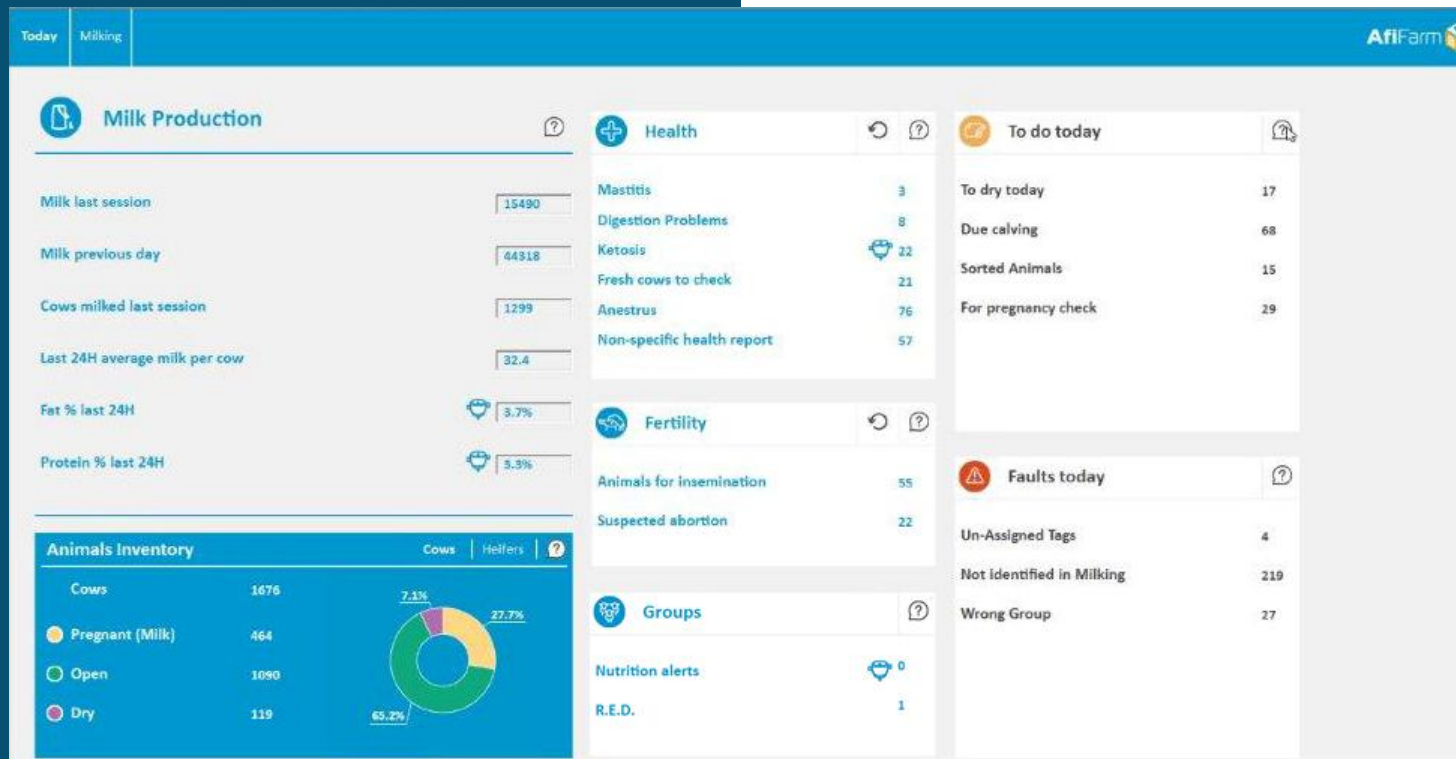


- AfiFarm 5.4 - Fully integrated
- 5.4版本-完美兼容
- Mobile app - Fully integrated
- 手机app-完美兼容
- Milking parlor - Fully integrated
- 奶厅-完美兼容
- Afisort + Weight – Fully integrated
- 分群门+称重-完美兼容
- Afifeed – Fully integrated
- 补饲-完美兼容



# VITAL KNOWHOW IN EVERY MOTION

## AFIFARM 5.4



# VITAL KNOWHOW



# IN EVERY MOTION

## Unique advantages

## 独特优势

- Advanced Heat Detection (new algorithm)
- 先进的发情揭发 (新算法)
- Advanced Health Detection
- 先进的健康疾病揭发
- Combination of:可组合
  1. Milk yield产量
  2. Conductivity电导率
  3. Rumination反刍
  4. Eating 采食





# VITAL KNOWHOW IN EVERY MOTION

## Sick Animal Report 怀疑病牛报告

Non-specific health - Updated Last: 23/10/2019 08:46:43

Design Refresh ?

Index	Cow	Grp.	DIM	Status	Current Ruminations < % >	Current Eating < % >	Code
1	156	1	62	Milk	-7	-17	
2	159	1	92	Milk	-35	-12	
3	620	1	113	Milk	-44	-21	
4	798	1	60	Milk	-3	-24	
5	832	1	62	Milk	10	-13	
6	2728	1	112	Milk	-1	-26	
7	3263	1	65	Milk	-14	-44	
8	6371	1	104	Milk	-21	-30	





# VITAL KNOWHOW IN EVERY MOTION

## Report Parameters 报告参数

Deviation Report Parameters

Health | Ingestion Health | Estrus | Weight | Milk Components

General

Hours in report ..... 24

Hours after heat ..... 24

Combined rumination and eating

**Animal Status (M - Milk, D - Dry, H - Heifer)**

	M	D	H	
Rumination Deviation (%) .....	30	30	30	-
Eating Deviation (%) .....	20	20	20	-
Hours between deviations .....	12	12	12	

Only rumination

**Animal Status (M - Milk, D - Dry, H - Heifer)**

	M	D	H	
Deviation (%) .....	45	45	45	-
Consecutive deviation in hours .....	3	3	3	

Only eating

**Animal Status (M - Milk, D - Dry, H - Heifer)**

	M	D	H	
Deviation (%) .....	45	45	45	-
Consecutive deviation in hours .....	3	3	3	

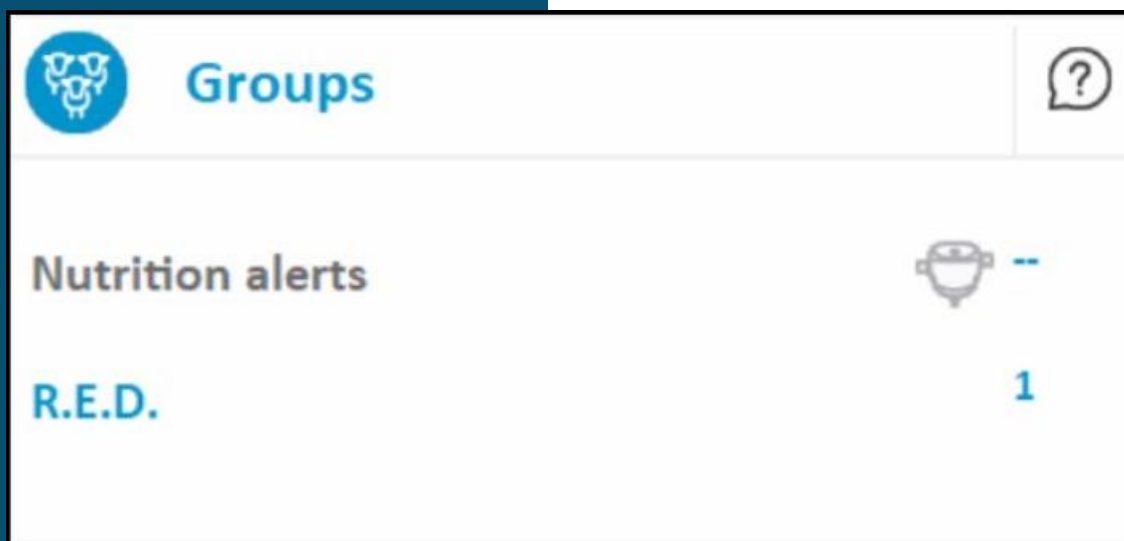
Defaults


OK Cancel Help



# VITAL KNOWHOW IN EVERY MOTION

## New Groups Report 新组别报警报告

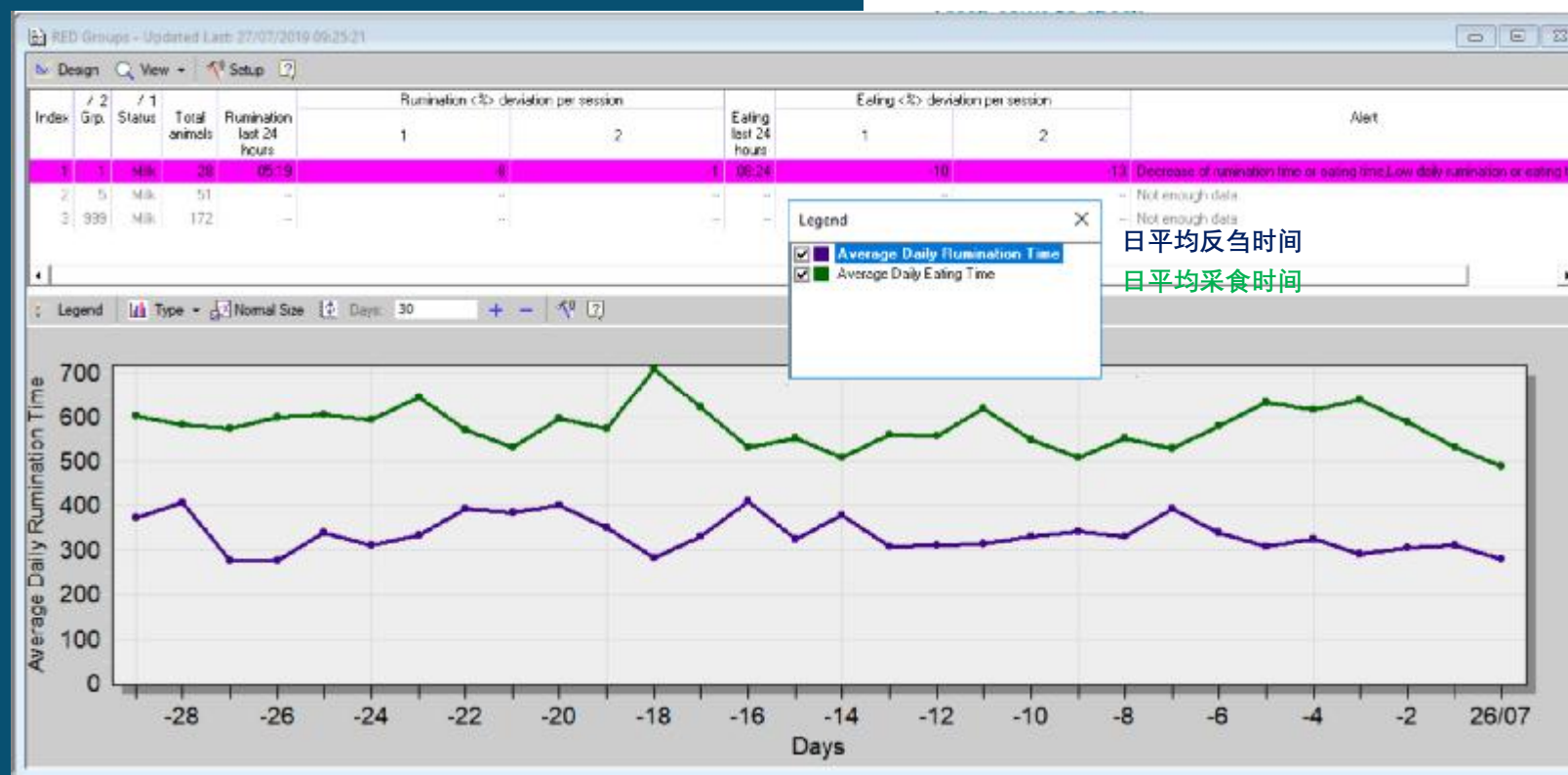


Groups		?
Nutrition alerts	 --	
R.E.D.	1	



# VITAL KNOWHOW IN EVERY MOTION

## New Groups Report 新组别报警报告



VITAL KNOWHOW

IN EVERY MOTION



AfiFarm™

5.4

NEW  
CONTENT

新内容

# AfiFarm 5.4

Release date – Q 1 2020      2020第一季度投入市场

Pricing model – like version 5.3  
定价规则-类似5.3版本

Minimal version– towards version 6  
最小版本-面向6版本软件

PC requirements – Windows 10 only  
PC电脑要求-仅允许W10系统



**Afifarm stand alone ABC  
dashboard has the Sorted  
Animals list**

**独立奶牛行为监测软件ABC主界面  
新增了分群牛列表**



**Sorted animals for  
standalone ABC**

**独立奶牛行为监测  
ABC已分群牛列表**

**Who is it for? 适用于哪些牧场?**

**Stand alone farms (no milk parlor)**

**with sort gate will be able to see the**

**list of sorted animals (same as Full**

**AfiFarm ABC)非阿菲金奶厅牧场，也可以**

**看到分群牛，同全系统软件ABC一样。**



1. **New improved Non-Specific Health report:**
  - a. Cows show in 1 report only
  - b. Will include Hef. And Dry
  - c. Trigger will include rest and activity Dev.

新改进的非特异性健康报告：

- a. 所有牛都在一个报告里
- b. 包含后备牛和干奶牛
- c. 筛选条件包括躺卧时间和活动量偏差



## Health reports on ABC dashboard

## ABC主界面健康报告

What is it for?有什么作用？

More efficient ABC Health section

ABC健康部分使用更高效

# Non-Specific Health Report-Trigger

## 非特异性健康报告-筛选参数

Deviation Report Parameters ×

Health | Act Health | Estrus | Weight | Milk Components

Rest Time Deviations

	Deviation % ↑			Deviation % ↓			
	M	D	H	M	D	H	
<b>Animal Status (M - Milk, D - Dry, H - Heifer)</b>							
0 - 100	50	50	50	+	40	40	40
101 - 200	40	30	30	+	35	30	30
Average Rest per session .....							
201 - 300	30	20	20	+	30	20	20
301 - 600	25	15	15	+	25	15	15
> 600	20	15	15	+	20	15	15

Activity Deviation

	Deviation % ↓			
	M	D	H	
<b>Animal Status (M - Milk, D - Dry, H - Heifer)</b>				
0 - 100	50	40	40	-
101 - 200	40	30	30	-
Average Activity per session .....				
201 - 300	30	25	25	-
> 300	20	20	20	-

Defaults

OK Cancel Help

## 2. Improved Fresh Cows to Check report (reduced false positive).

改进需要检查新产牛报告 (减少了假阳性  
牛)



# Health reports on ABC dashboard

# ABC主界面健康报告

What is it for?有什么作用?

More efficient ABC Health section

ABC健康部分使用更高效

AfiFarm initiates Milking  
Efficiency calculations at the  
end of session (and on Parlor  
End of Milk event like it was up  
to now)

软件在班次结束时启动挤奶效率  
的计算

## MEF calculations at the end of session



## 班次结束挤奶效率的计算

Who is it for?适用于?

Farms who milk 24/7 and sometimes  
start the parlor wash cycle at the middle  
of session, and once it is done resume  
milking连续24小时挤奶的牧场以及有时在班次中间  
开始奶厅清洗的牧场，一旦清洗结束，可以继续挤奶。



## Track per group 组别挤奶路径设置

AfiFarm allows user to select the milk track (number of sessions) per milk cows group and not for the whole herd - each individual group may have between 1 to 5 sessions.

软件允许用户为每个组别选择挤奶路径（班次序号），而无需整群统一设定-每一个组别都可以选择1-5个班次。

### Who is it for? 适用于?

Farms who milk some of the group in different milking schedules

不同组别挤奶次数不同的牧场



# Track per group

## 组别挤奶路径设置

Definition - Group Sessions

Herd/Group Code User Events Event Description Names Station Tank **Group Sessions**

Add Delete ?

Track	Sessions	Groups	Comment
Milk	03:00-12:00-19:00	1,2,3	System Track

Error

OK Cancel

Definition - Group Sessions

Herd/Group Code User Events Event Description Names Station Tank Group Sessions

Add Delete ?

Track	Sessions	Groups	Comment
Milk	03:00-12:00-19:00	2,3	System Track
User Track 1	03:00-19:00	1	

Error

OK Cancel

# Track Per Group 组别挤奶路径设置

Definition - Group Sessions

Herd/Group Code User Events Event Description

Add Delete

Track	Sessions	Groups
Milk	03:00-15:00	2,3,4,8,11...
Sander	03:00-10:00-16:00	1,5,6,7

Error

Groups Section

Available Groups

/ 1	Group Number	Group Name	Track Name
	2	Milk Group	Milk
	3	Milk Group	Milk
	4	Milk Group	Milk
	8	Milk Group	Milk
	11	Milk Group	Milk
	12	Milk Group	Milk
	13	Milk Group	Milk
	14	Milk Group	Milk
	16	Milk Group	Milk

Current Groups

/ 1	Group Number	Group Name
	1	Milk Group
	5	Milk Group
	6	Milk Group
	7	Milk Group

>>

<<

OK Cancel





# Include/exclude the risk factor in Suspected Ketosis report

## 怀疑酮病报告中可以包含或去掉风险因素

Suspected Ketosis (Combined) - Updated Last: 06/11/2019 14:34:51

Save Save As... Design Refresh  Include only cows detected by AfiLab ?

Index	Cow	Grp.	Lact. no.	BCS at dry (prev. lact.)	Offspring amount	Prev. (-1) dry days	/ 1 DIM	Fat/Protein			Yield			Daily yield	Daily avg. yield	Yield Last 24H%	% Loss of weight	Code
								1	2	3	1	2	3					
1	9560	4	2	3.75	1	72	17	1.65	--	1.52	10.8	11.2	10.4	32.4	24.1	29	7.0	P

# Ketosis report 酮病报告

Suspected Ketosis (Combined) - Updated Last: 30/12/2019 16:56:55

Save Save As... Design Refresh  Include only cows detected by AfiLab ?

Index	Cow	Grp.	Lact. no.	BCS at dry (prev. lact.)	Offspring amount	Prev. (-1) dry days	/ 1 DIM	Fat/Protein			Yield			Daily yield	Daily avg.yield	Yield Last 24H%	% Loss of weight	Code
								1	2	3	1	2	3					
1	923	6	4	3.75	1	54	7	1.12	2.15	1.66	10.3	7.9	8.3	26.5	19.8	40	--	D P
2	9698	99	1	--	1	--	7	1.40	1.91	1.38	9.4	8.0	6.3	23.8	16.7	36	--	D P
3	1180	3	3	--	1	44	8	--	1.52	1.56	--	6.1	8.0	14.1	16.8	-12	--	P
4	9687	99	1	--	1	--	12	1.17	1.57	1.56	12.1	11.1	11.6	34.8	26.7	23	--	P
5	9695	99	1	--	1	--	29	1.41	1.48	1.18	11.9	11.5	12.3	35.6	28.6	25	4.2	P

**Wrong group report is updated every session (and not once per day).**

**混群报告每班次更新（而不是像之前一样每天更新）**



**Wrong group session view**

**混群班次预览**

**What is it for?什么作用?**

**A more accurate Wrong Group indication in the ABC dashboard**

**ABC主界面上混群报告更加精确，可追踪到具体哪个班次开始混群**

**No SCC value in Afifarm and AfiControl anymore.**

**阿菲金软件中不再有SCC值，并且AfiControl里也不再有了。**



**Remove SCC**

**去除SCC体细胞**

**What is it for?有什么作用?**

**Avoid wrong and misleading**

**Somatic Cell Count values**

**避免错误和误导的体细胞值**

**Afi2Go Pro list (Animals for Insemination and Health issues) better synched with Afifarm list (delay of up to 30 minutes).**

**Afi2Go Pro 列表（需要输精的牛和健康报告），和软件中报告清单同步更及时（延迟30分钟左右）**



**Improved sync between AfiFarm and Afi2Go Pro手机app和软件同步更及时**

**What is it for?有什么作用？**

**Reduced discrepancy between the lists on Afifarm and Afi2Go Pro**

**减少了Afifarm和Afi2Go Pro之间的差异**

Each protocol is enabled by license file(for example DC305). Adding a new protocol needs a license file update.

每一个对接协议都需要许可文件（例如DC305）。

增加新的对接协议需要更新许可文件。



## Protocol licensing 协议许可

What is it for?有什么作用?

Better control on which protocol are used and an option to charge for using protocols in the future

更好地控制使用哪个协议，以及将来对使用协议收费的选项

# AfiFarm 5.4

## PC requirements

电脑配置要求

**Operating system**  
**操作系统**

**Windows 10 only!**  
Note that upgrade from  
previous versions may require  
Windows Operating  
System upgrade as well.  
只允许W10系统下  
从旧版本阿菲金软件升级后也需  
要升级操作系统



# PC requirements

## Server服务器

Operating system	Windows10 PRO (64 bit)		
No. of animals	Up to 1000	1001 - 5000	More than 5001
RAM(GB)	Min: 32	Min: 32	Min: 32
Processor	i7, 6 <sup>th</sup> generation or above	i7, 6 <sup>th</sup> generation or above	i7, 6 <sup>th</sup> generation or above
Primary HD	500GB Enterprise or Commercial Level SSD	500GB Enterprise or Commercial Level SSD	1000GB Enterprise or Commercial Level SSD
Recommended secondary non-SSD HD for backup	500GB 64MB cache / 7,200 RPM	500GB 64MB cache / 7,200 RPM	1000GB 64MB cache / 7,200 RPM
Additional required items	<ul style="list-style-type: none"> <li>UPS unit – mandatory (Server without UPS may suffer irreversible loss of data)</li> <li>Secondary network interface card for AfiActII reader is recommended</li> </ul>		

# PC requirements

## Controller 控制器

Operating system	Windows10 PRO (64 bit) or Windows Server 2012R2	
Number of animals	Up to 5000	More than 5000
RAM(GB)	16	32
Processor	i7, 6 <sup>th</sup> generation or above	i7, 6 <sup>th</sup> generation or above
HD type	Enterprise or Commercial Level SSD	Enterprise or Commercial Level SSD
Primary HD free space	500GB	500GB
Additional required items	<ul style="list-style-type: none"><li>· UPS unit – mandatory (controller without UPS may suffer irreversible loss of data)</li><li>· Secondary network interface card for AfiActII reader is recommended</li></ul>	
Monitor	<ul style="list-style-type: none"><li>· Supported resolution: 1920X1080</li><li>· Size: 21.5 inch and larger</li></ul>	

# PC requirements

## Reporter客户端

Operating system	Windows10 PRO (64 bit) or Windows Server 2012R2	
Number of animals	Up to 5000	More than 5000
RAM(GB)	16	16
Processor	Min: i5 Recommended: i7	i7
HD type	7200 RPM	7200 RPM
HD free space	500 GB	500GB
Monitor	<ul style="list-style-type: none"><li>Supported resolution: 1920X1080</li><li>Size: 21.5 inch and larger</li></ul>	

# Software – new installation

PN	Description
540C00L	AfiFarm 5.4 License, up to 1500 cows, First 2 PC
540C00M	AfiFarm 5.4 License, up to 500 cows, First 2 PCs
540C00S	AfiFarm 5.4 License, up to 200 cows, 1 PC
540C0FD	AfiFarm 5.4 AfiFeed SW module
540C0NC	AfiFarm 5.4 Farm Name Change
540C0PC	AfiFarm 5.4 Additional PC License, 1 Per PC
540C0XL	AfiFarm 5.4 License, unlimited cows, First 2 PCs
540C0XS	AfiFarm 5.4 License, up to 80 cows, 1 PC
540CA2L	AfiAct II 5.4 License, unlimited cows, 1 PC
540CA2S	AfiAct II 5.4 License, up to 500 cows, 1 PC
540CRTS	AfiFarm 5.4 Rotary Terminal, SW module only

# Software – Upgrade 软件升级

PN	Description
540CU0L	AfiFarm 5.4 Upgrade, up to 1500 cows, First 2 PC
540CU0M	AfiFarm 5.4 Upgrade, up to 500 cows, First 2 PCs
540CU0S	AfiFarm 5.4 Upgrade, up to 200 cows, 1 PC
540CUPC	AfiFarm 5.4 Additional PC Upgrade, 1 Per PC
540CUXL	AfiFarm 5.4 Upgrade, unlimited cows, First 2 PCs
540CUXS	AfiFarm 5.4 Upgrade, up to 80 cows, 1 PC
540CUA2L	AfiAct II 5.4 Upgrade, unlimited cows, 1 PC
540CUA2S	AfiAct II 5.4 Upgrade, up to 500 cows, 1 PC

## Price policy 定价策略

- Upgrade from AfiFarm 3.x: full price
- Upgrade from AfiFarm 4.x: full price
- Upgrade from AfiFarm 5.2: full price – price paid for AfiFarm 5.2
- Upgrade from AfiFarm 5.3: full price – price paid for AfiFarm 5.2  
– price paid for AfiFarm 5.3

# Afimilk Introduce:阿菲金介绍



AfiCloud

PLATFORM

阿菲云平台





# Cockpit 驾驶舱技术

WHO

谁

WHAT

内容

WHY

作用

Owners 老板  
Executives 管理者

Performance and  
Economic KPIs 表现  
和经济型KPIs

To evaluate  
decisions 评估和描述



Par







# Cockpit

# Gamification 游戏化



<http://cockpitdemo.afi.cloud/>

Part of **AfiCloud**



## Online service 在线服务

Access anywhere you are

Access at off-hours 任何地方任何时间都可访问



## How is the day progressing? 今天过的怎样?

Status of tasks – managing people  
任务状态-管人

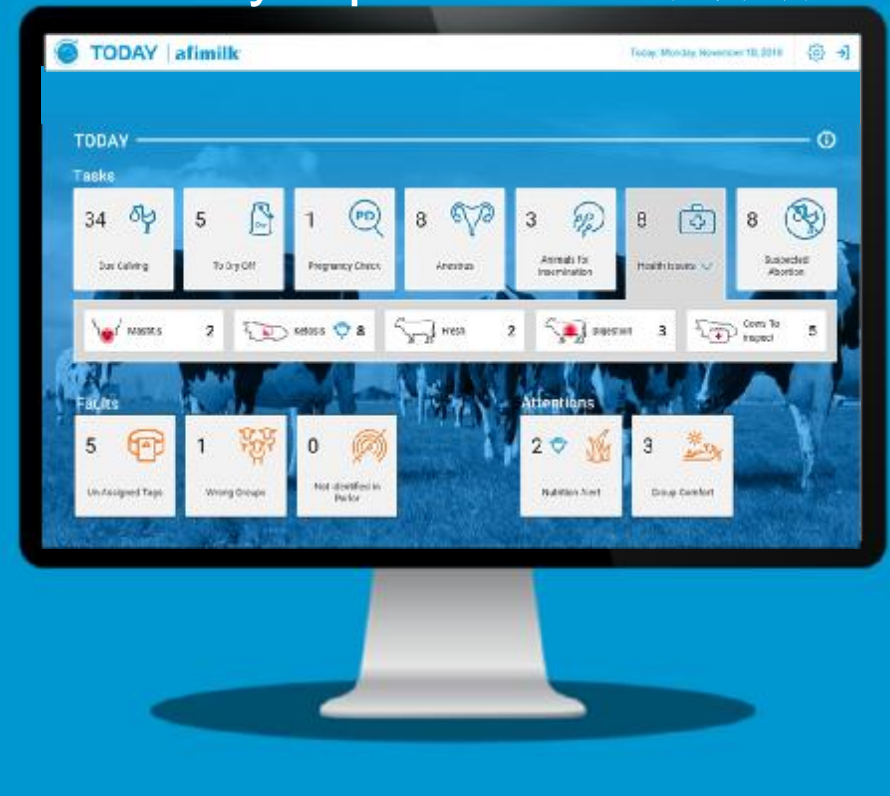
Status of animals & production  
动物状态&产量



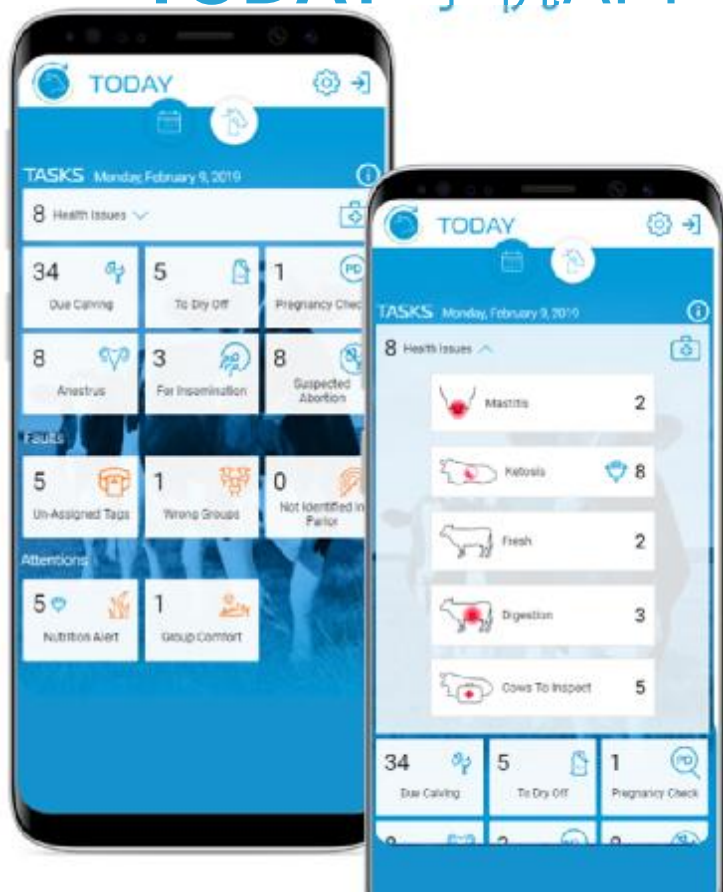
## TODAY Dashboard

今日面板

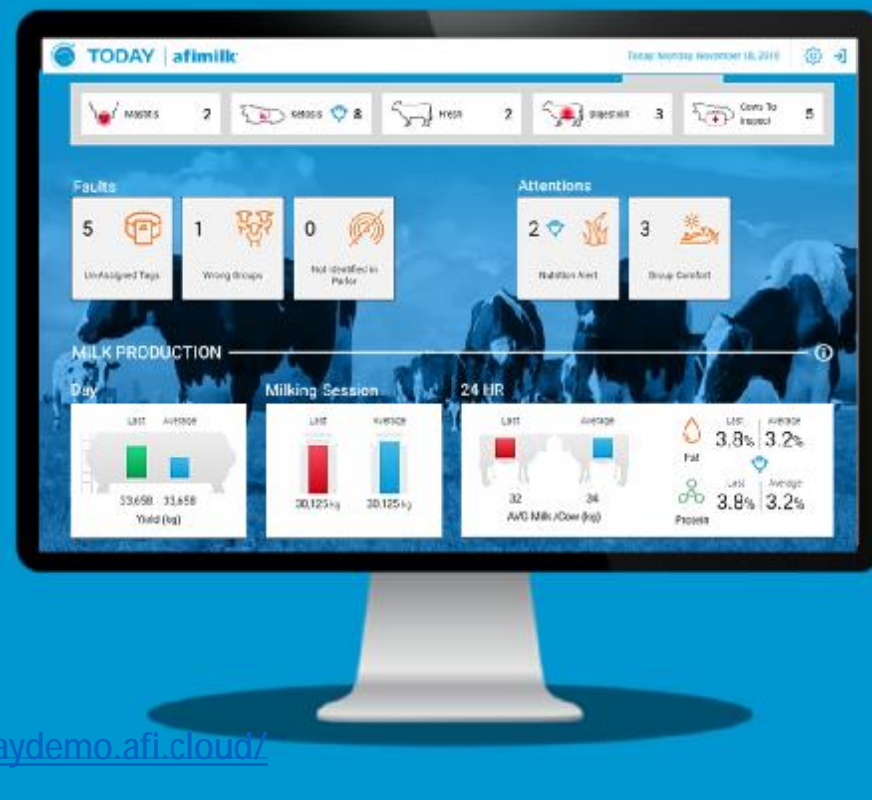
Daily Operation 日常操作



# TODAY PC电脑, TODAY 手机APP



# TODAY Cloud Dashboard 今天 云界面



<http://todaydemo.afi.cloud/>



# BACKUP 备份

AfiFarm Disaster Recovery  
Restore and Rollback Service



## Cloud Storage for Automatic AfiFarm Backups 用于自动AfiFarm备份的云 存储





## MOVE转移

### Export Animals 导出牛号



### Import Animals 导入牛号







**afimilk®**

**Thank You**